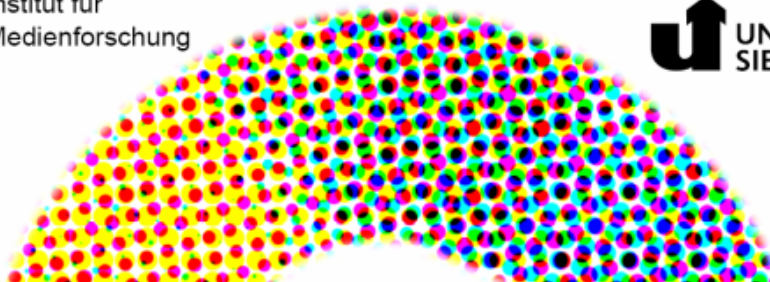


# Embedding TextGrid in Everyday Research Practice

Felix Lohmeier, SUB Göttingen  
[lohmeier@sub.uni-goettingen.de](mailto:lohmeier@sub.uni-goettingen.de)



Potentials of media and ICT in the Humanities  
[Annual Conference of the IfM, May 7-8, 2009](#)



# TextGrid: The Project

- Goal: Establish a modular Virtual Research Infrastructure for text scientists
  - TextGridLab: Tools and Services in an VRE
  - TextGridRep: Trusted long-term repository
- First Grid community project in the Arts and Humanities in Germany
- Collaborative project of eight academic and commercial partners
- Funded by the German Ministry of Education and Research (BMBF) with € 1.74 Mio plus an additional investment of € 600,000 for grid storage



**TextGridLab**

**user interface**

GUI 1

GUI ..n

**Services**

services

workflow

registry

service integration

data integration

**Middleware**

grid services

**D-Grid**

**Archives**

**TextGridRep**

**TEXT**  
GRID



# The Continuation of TextGrid

- 3-year-continuation of the project beginning in June 2009 (subject to the expected approval)
- Integration of new academic communities for greater coverage of the diverse perspectives in the Arts and Humanities
  - History of arts: Annotation of image data
  - Classics: Edition of glosses
  - Musicology: Integration of notes in XML-Editor
  - Another discipline (tbd)
- Ensure usage of the existing infrastructure developed during long term considerations



# Acceptance and Trust

- Acceptance and actual usage of the tools and services are key elements for the sustainability of a developed infrastructure.
- Therefore TextGrid will emphasize on community building and teaching in the continuation of the project.
- As several e-Humanities activities are evolving at present, there is also a great need for liaisons and interoperability to achieve sustainability.



# Specifics of the Arts and Humanities

- High specialization in general
- Large variation of resource types and structures
- Heterogenous data, which need special services
- Awareness of e-Science methods is low
  
- Closer cooperation between scholars and IT experts is (still) needed
- E-Humanities initiatives must provide evidence of scientific value to scholars



# Our plans for Community Building

- Different target groups: scientific users, developer and content-provider
- Workshops will address different needs. As a start: 3 hands-on-sessions in November 2009
- Teaching TextGrid courses online
- PR: „what is e-humanities?“ explain benefits from perspective of the traditional scholar
- Infrastructure has no value by itself, the scientific needs should define the point of view
- build a community that develops services and tools together according to the very needs of research

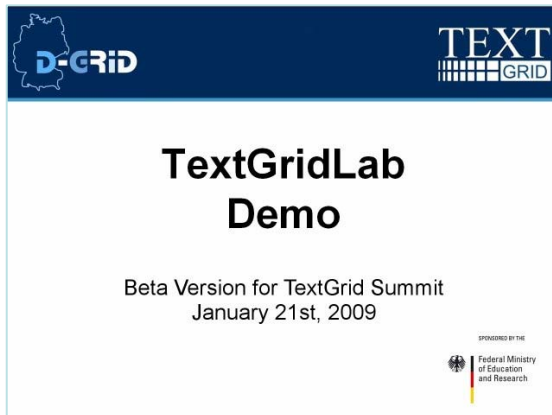


# TextGridLab Demo

- Beta version available for download  
<http://www.textgrid.de/beta.html>



- Video Demo: Highlights



→ [play swf](#)

→ [play wmv](#)



# Evaluation of the TextGridLab

- Goal: Deep understanding of specific research practices, which should frame development and targeted community building
- Survey of demand will be accompanied by a doctoral thesis: Michael Bender, Trier
- First results:
  - improvement of GUI needed - polish, polish, polish
  - Modular structure and interoperability is highly valued: Possibility for integration of specific extensions and connections with other projects



# Planned Improvements

- Improve robustness of tools and infrastructure
- Lots of user feedback needs to be worked into the tools
- Polish existing applications
- Improve the GUI to provide a comfortable entry point, which can easily be individualized
- A possible browser-based solution will be evaluated



## Towards the big e-Humanities picture

- Collaborate with international e-Humanities and e-Research initiatives (DARIAH, eAQUA, Clarin, DRIVER, Interedition, SHAMAN, integration with eSciDoc etc.)
- Ensure Interoperability, e.g. through participation in standardization
- Organizational sustainability may be achieved via representation as a academic community in WissGrid (which will organize contacts with resource provider)
- Develop generic Grid services that can be used by other Grid communities



# Embedding TextGrid in Research Practice

- crucial points on how to embed TextGrid in everyday research practice:
  - Build up trust and acceptance
  - Improve the GUI of the TextGridLab to provide a comfortable entry point
  - Provide access to various types of content through interfaces to catalogues and longterm data curation projects
  - Provide teaching and listen to specific needs
  - Interoperability and liaisons for the great e-humanities picture



# If we are successful...

- a paradigm shift may be achieved which
  - enhances variety of scientific methods through the emancipation of quantitative text analysis
  - enables subsequent use of tools and services
  - due respect to developers through tool citations
  - and rewards efforts for innovation
- This requires networking between e-Humanities initiatives and the creation of public awareness
- development should be driven by arts and humanities scholars and accompanied by e-research



# Thank You!

## Questions or comments?

The TextGrid Team  
(will be joined by additional researchers soon)

